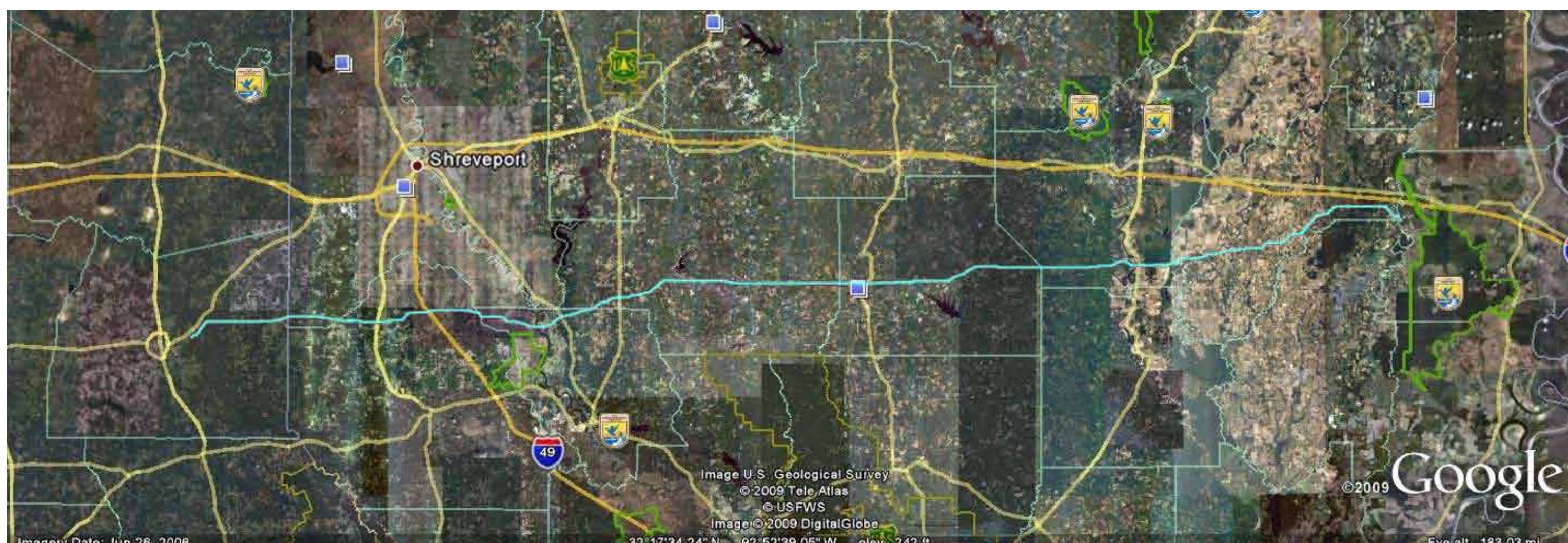


Tiger Pipeline Project

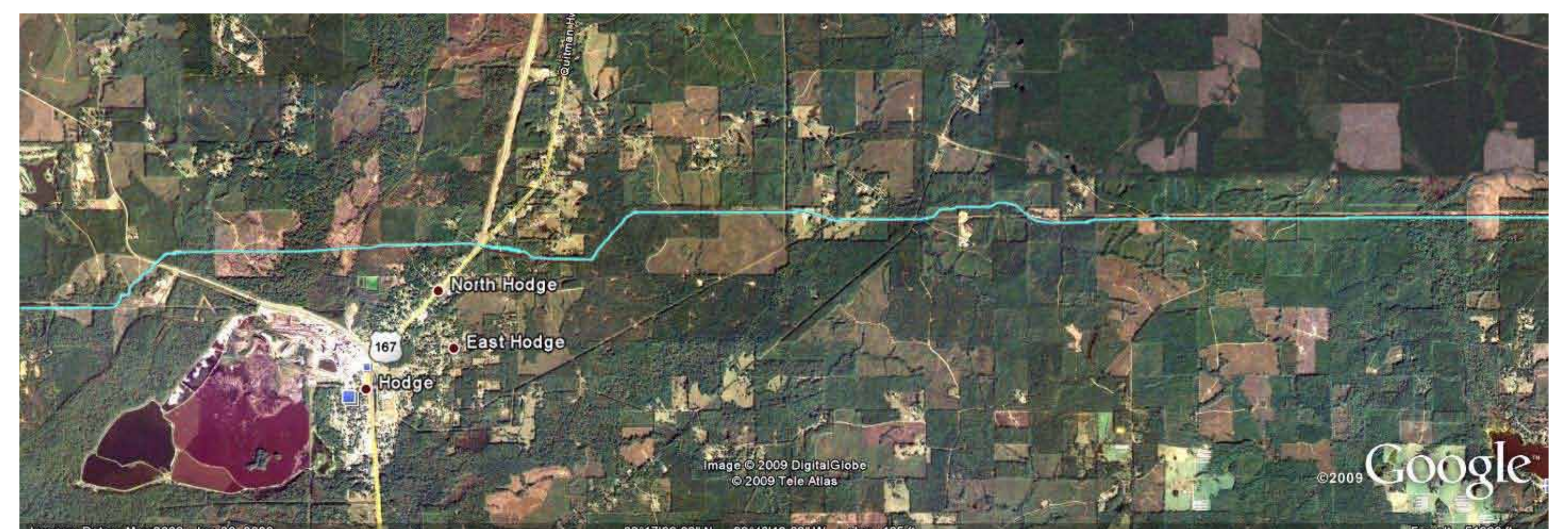
The use of computer aided design (CAD and geographic information systems (GIS) is used as an effective and efficient means for generating, storing, retrieving, utilizing and communicating data. Aerials and mapping for the Tiger Pipeline Project are created using GIS technology and visual graphics and databases for:

- ⇒ Collection and presentation of field survey data for pipeline design and agency review
- ⇒ Calculations of impacts on land uses, including forest land, agricultural land, and wetlands
- ⇒ Assessments of impacts on sensitive resources
- ⇒ Evaluations of alternate routes and/or construction footprints in the development of pipeline design



At full scale

At 50 percent scale



At street level